



just quality.

2017/18
catalogue
www.elektrostublla.com



CERTIFICATE



Management system as per
ISO 9001 : 2015

In accordance with TÜV NORD CERT procedures, it is hereby certified that

ELEKTROSTUBLLA Sh.p.k.
Rr. Hoxhe Jonuzi p.n.
61000 Viti
Kosovo

applies a management system in line with the above standard for the following scope

Mounting and installation of electro energetic equipment up to 110kV.
Production of electrical materials.

Certificate Registration No. 44 100 17 32 0337
Audit Report No. 3597 1630

Valid from 2018-01-31
Valid until 2021-01-30
Initial certification 2018


Certification Body
at TÜV NORD CERT GmbH

Pljevliv, 2018-01-31

This certification was conducted in accordance with the TÜV NORD CERT auditing and certification procedures and is subject to regular surveillance audits.

TÜV NORD CERT GmbH

Langemarckstrasse 20

45141 Essen

www.tuev-nord-cert.com



Deutsche
Akkreditierungsstelle
D-ZM-12007-01-01



OUR COMPANY

Since 1986 we have been operating on electrical engineering, however Elektrostublla Company officially is established in 1992 by Ing. Marjan Ramaj. For the period of 1992-2000 our success was incomplete because of political issues during that time in Kosovo, but then our accomplishments are achieved after the war of Kosovo. We began producing corrugated pipe since in 2001 and in 2013 we became the leader of electrical engineering in Republic of Kosovo. We were honored with the "Fidesff award in Philanthropy by "Forum for Civic Initiativesff. Today Elektrostublla maintains over 50 European standard products and owns the ISO 9001 certificate.



table of contents.

I. CORRUGATED PLASTIC PIPE

Normal UV Flex 320N

Strong Flex 750N

Special Flex 1250N

Couplings

II. DOUBLE-WALL CORRUGATED PIPE

Underground Flex 450N

Underground Couplings

III. ELECTRICAL INSTALLATION BOXES

Flush Mounting

Flush Wiring Installation

Concrete Installation

Modular System

Surface Mounting

IV. ABC CABLE ACCESSORIES

Insulation Piercing Connector

Clamp for Carrying Support

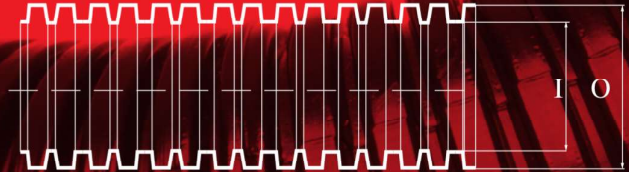
Tension Support Clamp for LV ABC Cable

Aluminium Bracket LV ABC cables

Pipe ring for hanging ABC cables and AI brackets on posts

www.elektrostublla.com

Normal UV Flex 320N



Color: 

Application

Normal UV Flex is made for cable protection in building and industrial applications, UV resistant pipe for various application in indoor and especially outdoor applications.

Compressive strength:

320 N

Working temperature:

-25 °C + 105 °C

Material:

HDPE, Thermoplastic

Impact resistance:

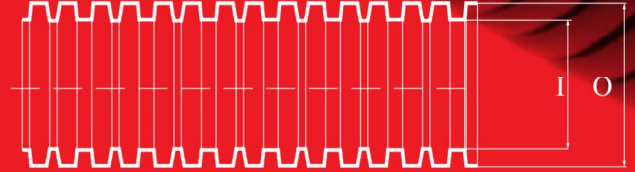
1,0kg/100mm

Standard:

DIN EN 61386-01

Product Code	EAN	Diameter NW(mm)	Outer Ø (mm)	Inner Ø (mm)	Package (m)
ES001	3900521770017	16/11	16	11	100
ES002	3900521770024	20/14	20	14	100
ES003	3900521770031	25/19	25	19	50
ES004	3900521770048	32/25	32	25	50

Strong Flex 750N



Color:   

Water Pipe Protection Standard Color:



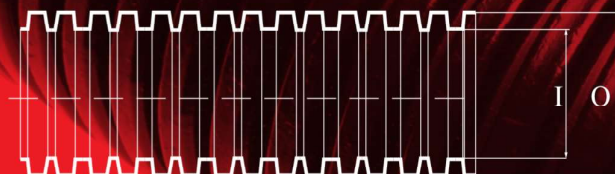
Compressive strength: **750 N**
Working temperature: **-25C +60C**
Material: **HDPE**
Impact resistance: **2,0kg/100mm**
Standard: **DIN EN 61386-22**

Application

Is a strong and flexible pipe.
Used on walls, under the plaster, in all kinds of concrete floor and ceiling slabs, on suspended ceilings and under areas. Is ideal for use in indoor and outdoor electrical installations, especially in areas of mild mechanical oppressions.

Product Code	EAN	Diameter NW(mm)	Outer Ø (mm)	Inner Ø (mm)	Package (m)
ES005	3900521770055	16/11	16	11	100
ES006	3900521770062	20/14	20	14	100
ES007	3900521770079	25/19	25	19	50
ES008	3900521770086	32/25	32	25	50

Special Flex 1250N



Application

Is a special and flexible pipe.

Used on walls, under the plaster, in all kinds of concrete floor and ceiling slabs, on suspended ceilings and under areas. Is ideal for use in indoor and outdoor electrical installations, especially in areas of high mechanical oppressions

Color:   

Water Pipe Protection Standard Color:



Compressive strength: **1250 N**

Working temperature: **- 25C + 60C**

Material:

HDPE

Impact resistance:

5,0kg/100mm

Standard:

DIN EN 61386-22

Product Code	EAN	Diameter NW(mm)	Outer Ø (mm)	Inner Ø (mm)	Package (m)
ES009	3900521770093	16/11	16	11	100
ES010	3900521770109	20/14	20	14	100
ES011	3900521770116	25/19	25	19	50
ES012	3900521770123	32/25	32	25	50

Couplings



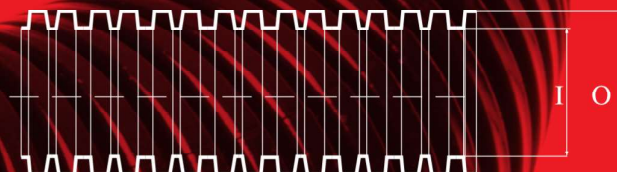
Color:   Transparent

Material: **HDPE/PP**

Couplings for the connection of pliable pipes: Normal UV Flex, Strong Flex and Special Flex

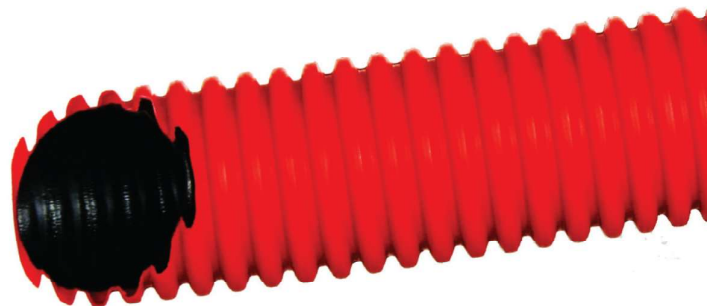
Product Code	EAN	Diameter NW(mm)	Outer Ø (mm)	Inner Ø (mm)	Package (m)
ES013	3900521770130	16/11	16	11	50
ES014	3900521770147	20/14	20	14	50
ES015	3900521770154	25/19	25	19	25
ES016	3900521770161	32/25	32	25	25

Underground Flex 450N



Color:   Black UV

Compressive strength: **450 N**
Working temperature: **- 5C**
Operating Temperature up to: **+ 60C**
Material: **HDPE**
Impact resistance: **-5C 5,0kg/h**
Standard: **DIN EN 61386-24**



Application

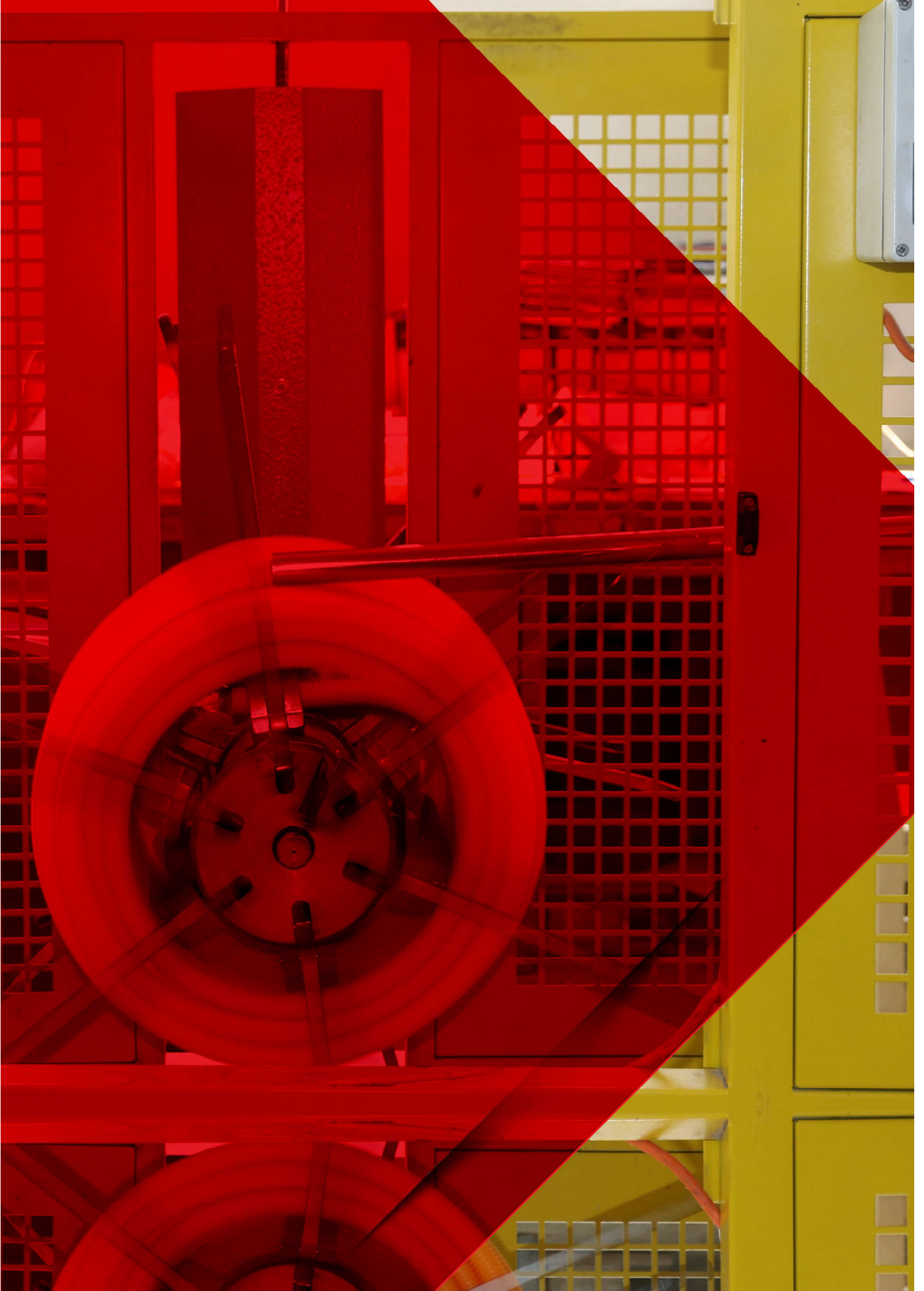
Underground Flex is designed to protect wires and telephone cables in underground installation. The double-wall pipe is high density polyethylene pipe, external is corrugated and internal is smooth.

Product Code	EAN	Diameter NW(mm)	Outer Ø (mm)	Inner Ø (mm)	Package (m)
ES017	3900521770178	40	40	34	50
ES018	3900521770185	50	50	42	50
ES019	3900521770192	63	63	52	50
ES020	3900521770208	75	75	63	50

Underground Couplings



Product Code	EAN	Diameter NW(mm)
ES021	3900521770215	40
ES022	3900521770222	50
ES023	3900521770239	63
ES024	3900521770246	75



ELECTRICAL INSTALLATION BOXES

Flush Mounting

Type	Flush Box 60
Product Code	ES034
EAN	3900521770345
Color	Black
Depth	60mm
Temperature	650C
Protection rate	IP 20
Tension	500 V
Packing	10/100



Flush Wiring Installation

Type	Flush Wiring Box 100x100x70
Product Code	ES035
EAN	3900521770352
Color	Black
Depth	70mm
Temperature	650C
Protection rate	IP 20
Tension	500 V
Packing	10/100



Wiring Box Cover

Type	Cover 100x100
Product Code	ES036
EAN	3900521770369
Color	White
Temperature	750C
Packing	10/400



Concrete Installation

Type	Concrete 60
Product Code	ES036
EAN	3900521770376
Color	Red - Blue
Depth	70mm
Temperature	650C
Protection rate	IP 20
Tension	500 V
Packing	10/100



Modular System

Type	Modul 3	Modul 4	Modul 7
Product Code	ES038	ES039	ES040
EAN	3900521770383	3900521770390	3900521770406
Color	Yellow		
Depth	50mm		
Temperature	650C		
Protection rate	IP 20		
Tension	500 V		
Packing	10/200	10/150	10/100



Surface Mounting

Type	ABS 100x100	ABS 150x110	ABS 190x140	ABS 260x200
Product Code	Es041	Es042	Es043	Es044
EAN	3900521770413	3900521770420	3900521770437	3900521770444
Color	White			
Material	ABS			



just quality.

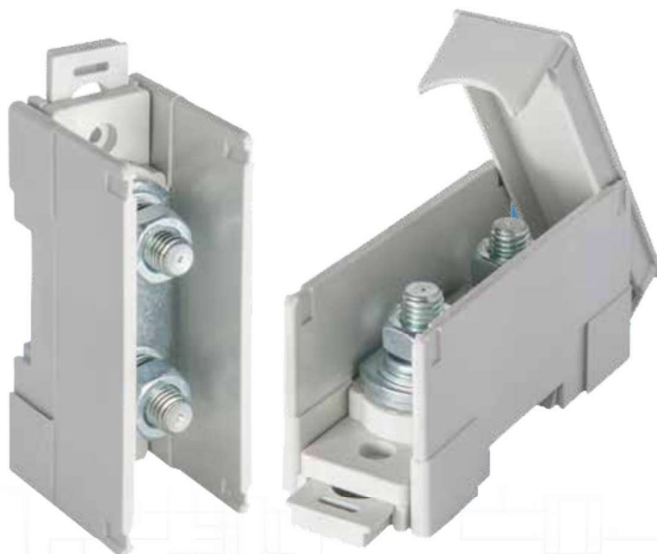
Concrete Installation

Type	Spotlight Box
Product Code	ES045
EAN	3900521770505
Color	Black, Gray, Blue
Depth	106 mm
Temperature	650°C
Diameter	76 mm
Tension	500 V
Packing	10/100



DIN Rail terminal block

Type	35/1.4mm ²
Product Code	ES046
EAN	3900521770512
Color	Different
Tension	500V
Current	160A
No of Poles	1,2,3,4,5
Wire	4mm - 25mm
Packing	10/100



ABC CABLE ACCESSORIES



Insulation Piercing Connector

Insulation Piercing Connector 1.5-6/35-70 is used for connecting separating duct for public lightning to the distributive self-supporting cable beams under tensions, rubber insert tightening is made by a moment screw with force of 2,5 bar. The joint with a rubber insert prevents electric corrosion, and Al and Cu separating ducts can be connected to house plug boxes. Position 1: place of tearing by a moment screw (automatic regulation of conductor tightening force by means of moment screw which tears out when appropriate moment of 10Nm is achieved). Adjusting is made by a wrench N-10 while assembling and dismantling by a wrench N-10, main duct 16÷70 mm², separated duct 1,5÷6 mm². When working under power always wear protection gloves

Product Code	EAN	Type	A mm	B mm	C mm	Packing
ES025	3900521770253	1.5-6/35-70	37.7	22.0	70.7	100

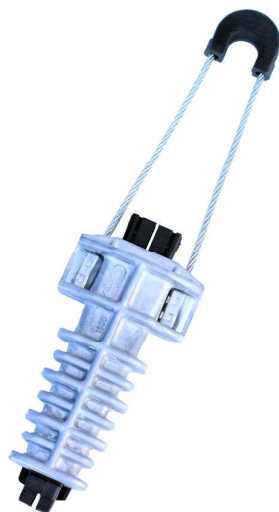
Tension Support Clamp for LV ABC Cable



Tension support clamp for household connection 2x16mm or

Applied in household connection and carried out by self-supporting cable bunches: 2x16 mm², 2x25 mm², 4x16 mm² and 4x25 mm², it is used with brackets for low voltage ABC cables beams on connecting columns and with brackets (roof, tubular roof brackets and wall brackets). It is made of special materials of very high hardness, endures support in the view of mechanical and electric efforts and is resistant to atmosphere influences. Clamp constructions allows fast and easy assembling on the bracket her conditions. Note: during assembling, cables or piece of cable, must be 4x16mm

Product Code	EAN	Type	A mm	B mm	C mm	Packing
ES026	3900521770260	4x16	32.0	45.0	187	80
ES051	3900521770550	2x16	25.0	42.0	187	100



Tension support clamp for LV ABC cable 16÷71.5 mm (1500 KN)

Used for tension support of LV ABC cable bunch wooden, concrete and metal posts or building walls. This clamp is used with LV ABC cables that have supporting conductors with a section of 16÷71.5 mm². It is made of aluminum alloys, of very high mechanic hardness, self-tightening insulating polyamide insert. It endures support in the view of mechanical and electric efforts and is resistant to atmosphere influences. Clamp construction allows fast, easy and safe fitting and dismantling by hands, without any tool, in any weather conditions.

Product Code	EAN	Type	A mm	B mm	C mm	Packing
ES027	3900521770277	35-71	44	76	307	30

Tension Support Clamp for LV ABC Cable



Tension support clamp for household connection 1x16 - 35mm

Applied in household connection and carried out by self-supporting cable bunches: 1x16 - 35 mm, it is used with brackets for low voltage ABC cables beams on connecting columns and with brackets (roof, tubular roof brackets and wall brackets). It is made of special materials of very high hardness, endures support in the view of mechanical and electric efforts and is resistant to atmosphere influences. Clamp construction allows fast and easy assembling on the bracket her conditions.

Note: During assembling, cables or piece of cable must be 1x16 - 35mm

Product Code	EAN	Type	A mm	B mm	L mm	Packing
ES050	3900521770529	1x16 - 35mm	25	130	310	30



Tension support clamp for household connection 4x16 - 35mm

Applied in household connection and carried out by self-supporting cable bunches: 4x16 - 35 mm, it is used with brackets for low voltage ABC cables beams on connecting columns and with brackets (roof, tubular roof brackets and wall brackets). It is made of special materials of very high hardness, endures support in the view of mechanical and electric efforts and is resistant to atmosphere influences. Clamp construction allows fast and easy assembling on the bracket her conditions.

Note: During assembling, cables or piece of cable must be 4x16 - 35mm

Product Code	EAN	Type	A mm	B mm	C mm	Packing
ES049	3900521770536	4x16 - 35mm	39	50	225	30



Tension support clamp for LV ABC cable 4x50 - 95mm

Used for tension support of LV ABC cable bunch wooden concrete and metal posts of building walls. This clamp is used with LV ABC cables that have supporting conductors with a section of 4x50 - 95mm. It is made of aluminum alloy, of very high mechanic hardness, self-tightening insulating polyamide insert. It endures support in the view of mechanical and electric efforts and is resistant to atmosphere influences. Clamp construction allows fast, easy and safe fitting and dismantling by hands, without any tool, in any weather conditions.

Product Code	EAN	A mm	B mm	C mm	Packing
ES50-95	3900521770543	45	120	332	30

Clamp for Carrying Support

Clamp of this kind is used with LV ABC bracket when carrying support of LV ABC is installed on posts. Support is carried through the carrying line (16÷71.5 mm²). Clamp is made of highly firm material and resistant on all weather conditions. Advanced construction enables fast, easy and safe assemble. After laying of carrying cable, clamp is closed with special buckle which exclude possibility for its unlocking and loosening. It is used with AI bracket.

Product Code	EAN	Type	A mm	B mm	C mm	Packing
ES028	3900521770284	16-71.5	57.5	96.0	128.0	100



Aluminium Bracket LV ABC cables

Universal bracket UIANKON is used for carrying and tension holding low voltage ABC cables. AI bracket can be attached on generalpurpose bracket, clamping ring for carrying ABC cables or directly on wooden posts-by screw bolts or tightening whit stainless steel tape.

Product Code	EAN	Type	A mm	B mm	Packing
ES029	3900521770291	UI-AL console/bracket	90	180	100

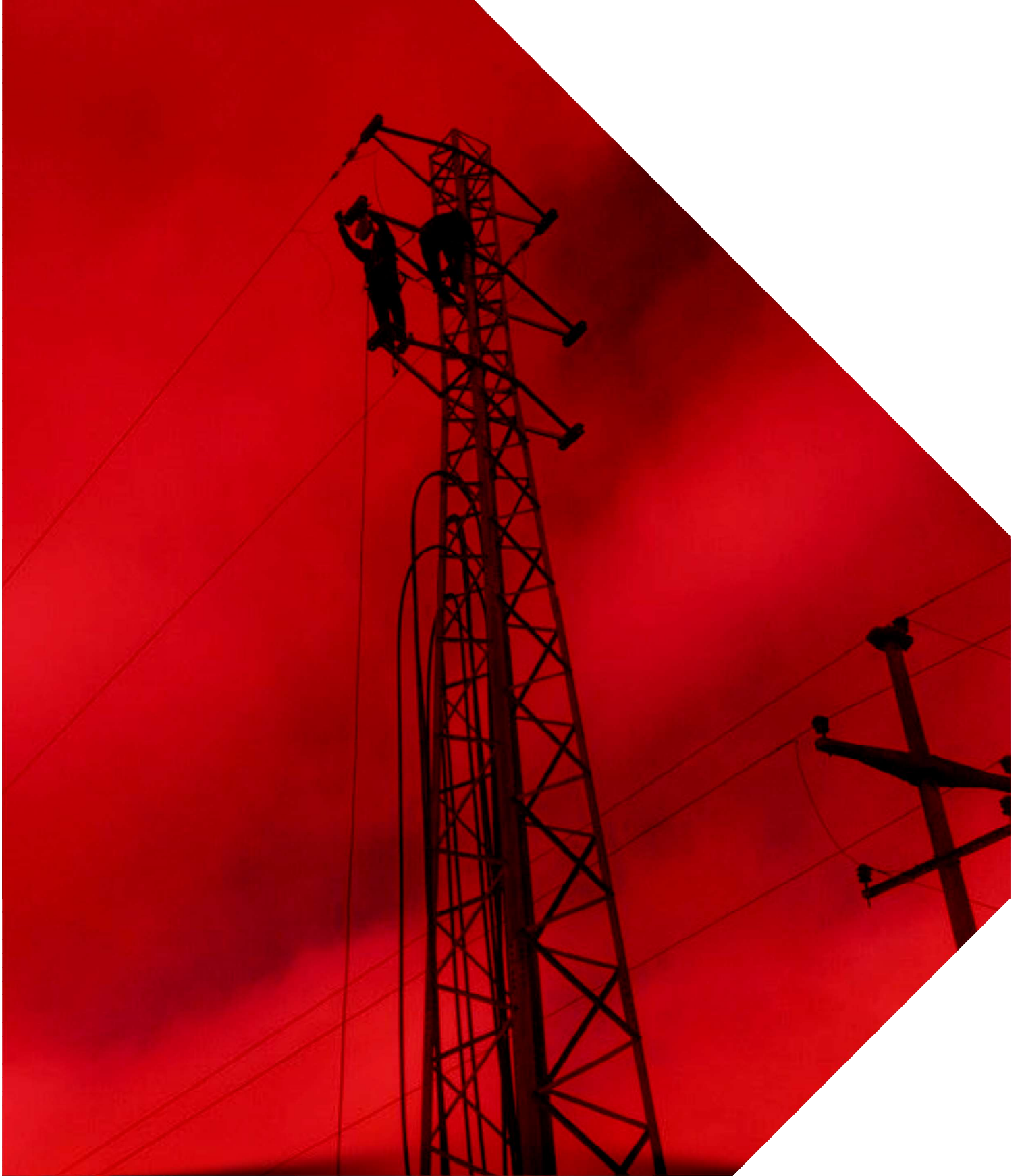


Pipe ring for hanging ABC cables and AI brackets on posts

It is used for accepting LV ABC cable beams reinforced concrete, wooden and metal round posts. This pipe ring is constructed for supporting and tightening hinging-directly or by related equipment, or when several house plug boxes are to be connected from one point. It is universal for GENERAL PURPOSE. It is made of St Fe sheet, while hooks are of filled iron 10mm, galvanized. Besides the a.m. dimensions, brackets of other dimensions can be made as per customer requirement.



Product Code	EAN	Type	d (mm)	Package
ES030	3900521770307	UIAIC 120	120 ÷ 130	10
ES031	3900521770314	UIAIC 130	130 ÷ 150	10
ES032	3900521770321	UIAIC 170	170 ÷ 200	10
ES033	3900521770338	UIAIC 200	200 ÷ 260	10





*Shoqeri për projektim,
prodhim dhe inxhiniering.*



Scan for
more
about us!

Address: Str Prishtinë-Ferizaj km8
10000, Prishtina - Kosovo
Tel: +38649100102
E-mail: info@elektrostublla.com
www.elektrostublla.com